

Super Staple™

Nitinol Bone Fixation System

STABLE

High strength and force insure
stable fixation

SIMPLE

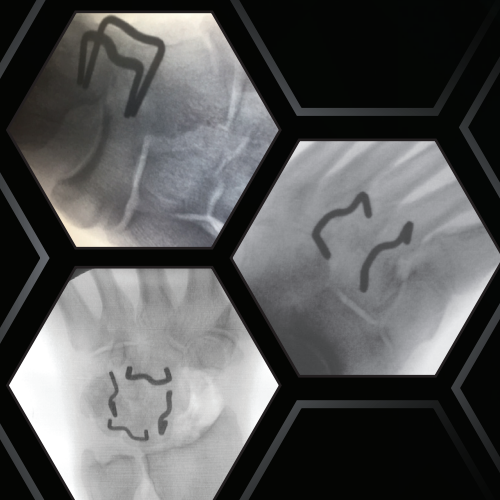
ZeroPrep™ pre-loaded insertion system
with instantly active implant

VERSATILE

Sizes for all fore, mid, and rear foot
reconstructions

FUSION

Dynamic compression for
bone healing



METRIC®
BRINGING BONES TOGETHER™

Super Staple™ Design Features



Patented SigmaArc™

- High strength and compression forces
- Low bone profile minimizes tissue disruption
- Contracts to bring bones together
- Most uniform compression available

ZeroPrep™ Pre-loaded Insertion System

- Simple push-in technique
- Pre-Sterilized System
- Disposable instrumentation
- Room temperature storage
- No activation required
- Minimally invasive procedure



Super Scaffold™

We bring you superior fixation,
Learn more at MetricMD.com

©2025 Metric Medical Devices, Inc.
846 Silver Springs, Helotes, TX 78023
(830) 535-6300

U.S. Federal Law restricts this device to sale by or on the order of a physician
Super Staple™ U.S. Patents 8,721,646 B2; 9,451,955 B2; 9,743,926; 9,451,957; 9,339,268;
9,017,331; 10,448,979; 10,512,459; E.P. 2,736,421 B1, other patents pending
Super Scaffold™ U.S. Patents 9,907,585; 10,537,370; 10,448,979; USRE049667; other patents pending

MEAN Compression and Reduction Data is presented
(Compression: lbf, S.E. <2.31) (Reduction: %, S.E. <2.87)

A01-008-01 (Q)

METRIC
BRINGING BONES TOGETHER™



S

P/N 21401

Dimensions: 09 x 09 x 09 1.5mm

Compression Force: 8.2 lbf

Reduction(mm): Bridge 1.2 Leg 2.9

P/N 16801

Dimensions: 11 x 10 x 10 1.5mm

Compression Force: 10.9 lbf

Reduction(mm): Bridge 1.4 Leg 4.0

P/N 16901

Dimensions: 11 x 15 x 13 1.5mm

Compression Force: 11.3 lbf

Reduction(mm): Bridge 1.0 Leg 4.0

P/N 17001

Dimensions: 13 x 10 x 10 1.5mm

Compression Force: 9.6 lbf

Reduction(mm): Bridge 1.2 Leg 3.5

P/N 17101

Dimensions: 15 x 12 x 12 1.5mm

Compression Force: 10.9 lbf

Reduction(mm): Bridge 1.5 Leg 5.4

M

P/N 17201

Dimensions: 15 x 12 x 12 2.0mm

Compression Force: 13.5 lbf

Reduction(mm): Bridge 2.0 Leg 5.2

P/N 17301

Dimensions: 18 x 18 x 15 2.0mm

Compression Force: 16.3 lbf

Reduction(mm): Bridge 1.8 Leg 6.2

P/N 17401

Dimensions: 20 x 20 x 20 2.0mm

Compression Force: 18.6 lbf

Reduction(mm): Bridge 1.6 Leg 8.9

L

P/N 17501

Dimensions: 20 x 20 x 20 2x3mm

Compression Force: 21.4 lbf

Reduction(mm): Bridge 1.6 Leg 9.0

P/N 22001

Dimensions: 25 x 25 x 25 2x3mm

Compression Force: 26 lbf

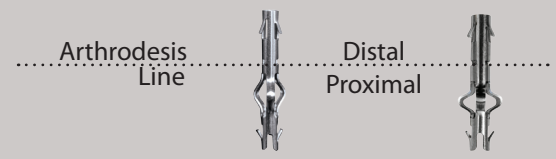
Reduction(mm): Bridge 1.5 Leg 12.9

Maximized Fusion Interface



PRODUCT SIZING GUIDE

NOTE Implants actual size: 1.1mm K-Wire compatible



Part#	2265L3	2565S3
	S	M
Drill Bit (mm):	2.2	2.7
Distal Length (mm):	6.5	6.5
Proximal Length (mm):	11.0	13.0
Contraction (mm)**:	1.0	1.5
F Expansion (lbf)*:	3.5	3.2
F Compression (lbf)*:	5.5	5.5

*Mean force (lbf, S.E. <0.30) ** Mean Shape Change (mm, S.E. <0.10)

OmegaBow™



Super Scaffold™

Intramedullary Fixation Implant

STABLE

Dynamic compression and multiaxial fixation prevent rotation

SIMPLE

ZeroPrep™ sterile pre-loaded insertion system with instantly active implant

VERSATILE

Cannulated for Kirschner-wire compatibility

FUSION

Optimized fusion interface for bone in-growth



We bring you super fixation,
Learn more at MetricMD.com

©2023 Metric Medical Devices, Inc.
846 Silver Spgs. Helotes, TX 78023
(830) 535-6300

U.S. Federal Law restricts this device to sale by or on the order of a physician

Super Staple™ Patents U.S. 8,721,646; 9,017,331; 9,339,268; 9,451,955; 9,451,957; 9,734,926; 10,512,459; EP2,736,421; Hong Kong 15,101,842.1; and other patents pending

Super Scaffold™ Patents 9,907,585; 10,448,979; 10,537,370; EP 2,765,936; other patents pending

A02-001-02 (D)



Super Staple™

METRIC
BRINGING BONES TOGETHER™



METRIC
BRINGING BONES TOGETHER™

Super Scaffold™ Design Features



- A Hollow Scaffold**
- Allows bone in-growth
 - K-wire compatible for adjacent joint stabilization
 - Maintains intramedullary canal

- B Proprietary Nitinol Memory Alloy**
- Instantaneously active
 - High bone fixation forces

- C OmegaBow™**
- Expands to stabilize
 - Contracts to pull proximal and distal bones together
 - Provides continuous compression

- D Bone Anchors**
- Lock into bone and provide multiaxial fixation
 - Allow for compression at osteotomy

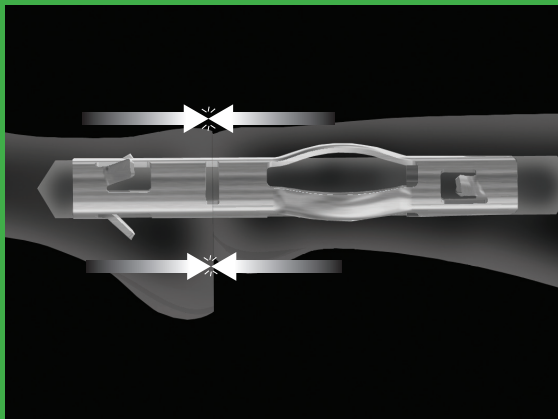
- E ZeroPrep™ Pre-loaded insertion system**
- Simple push-in technique
 - Disposable instrumentation
 - Room temperature storage
 - No activation required



The **ONLY** Interdigit Fixation Implant to Offer Both:

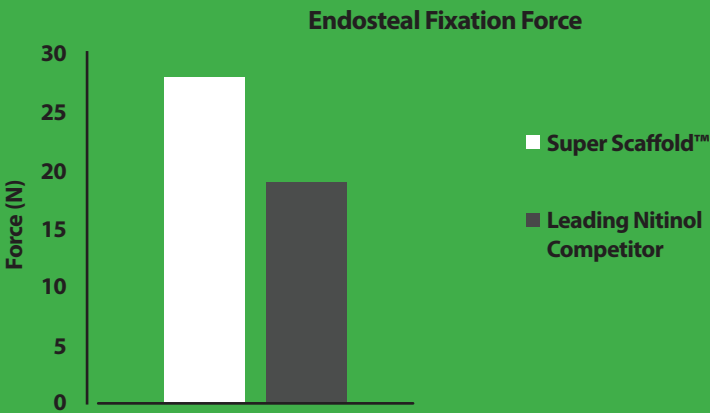
Dynamic Axial Compression

- Continuous compressive forces on the fusion interface
- Maintains bone on bone contact
- Only product to compensate for normal bone resorption



Stabilizing Fixation

- OmegaBow™ and bone anchors provide multi-axial stabilization
- Prevents axial rotation



Wolff’s Law: Applying mechanical forces strengthens bone by stimulating cellular growth.

	ST	HL	Metric Super Scaffold™
Contracting forces at osteotomy			✓
Bone conducting scaffold			✓
Cannulated for k-wire compatability			✓
Rotational stability	✓	✓	✓
Single drill procedure - no broaching			✓
Activates at room temperature			✓
All-in-one procedural kit		✓	✓
Pre-loaded insertion instrument		✓	✓

Breakthrough design for *superior fixation* and bone healing

SuperSTEP™

Nitinol Bone Fixation System

STABLE

High Strength and force insure
stable fixation

SIMPLE

ZeroPrep™ pre-loaded insertion system
with instantly active implant

VERSATILE

Sizes for mid and rear foot
reconstructions

FUSION

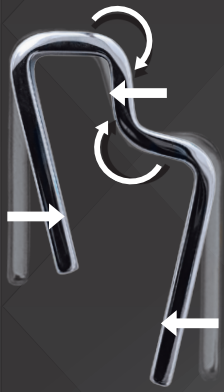
Dynamic compression for
bone healing



METRIC®
BRINGING BONES TOGETHER™

SuperSTEP™

Design Features



Patented ZetaArc™

- Unique variable step height
- High strength and compression forces
- Minimally invasive push in technique
- Shortening bridge and inward moving leg
- Most uniform compression available
- Low bone profile
- Various STEP heights: 6mm, 8mm, 10mm

P/N 20063	STEP-06
Dimensions: STEP-06 20 x 20 x 20 2x3mm	
Compression Force: 21.2 lbf	
Reduction:	Bridge 17% Legs 42%
P/N 20083	STEP-08
Dimensions: STEP-08 20 x 20 x 22 2x3mm	
Compression Force: 21.2 lbf	
Reduction:	Bridge 17% Legs 42%
P/N 20103	STEP-10
Dimensions: STEP-10 20 x 20 x 22 2x3mm	
Compression Force: 21.2 lbf	
Reduction:	Bridge 17% Legs 42%



ZeroPrep™ Pre-loaded Insertion System

- Included disposable instrumentation
- Room temperature storage
- Instantaneously active
- Enhances infection control
- Worker safety considerations
- Logistically simple and ready



**We bring you superior fixation,
Learn more at MetricMD.com**

© 2020 Metric Medical Devices, Inc. 846 Silver Springs, Helotes, TX 78023
(830) 535-6300 A03-008-01 IR
U.S. Federal Law restricts this device to sale by or on the order of a physician
Patents 8,721,646 B2; 9, 451,955 B2; 9,743,926; 9,451,957; 9,339,268; 9,017,331;
10,512,549; E.P. 2,736,41 B1; 10,448,979, other patents pending