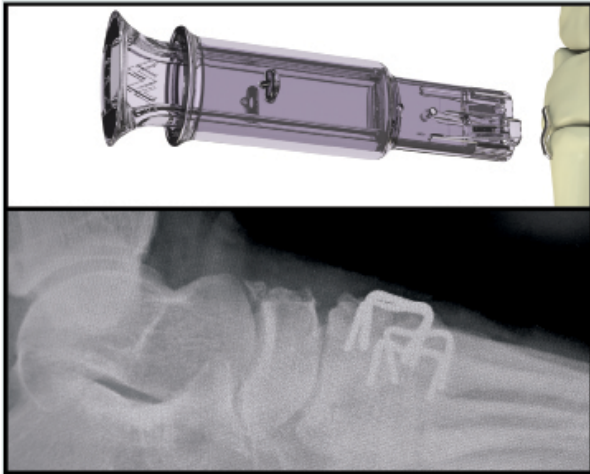




Does A New Nitinol Staple Redefine Reliable Compression?



Barry Erdman, DPM, FACFAS, notes the rigid compression properties of the Super Staple Classic allow it to pass even the most vigorous stress tests. "I leave the OR with better peace of mind that the bones will heal appropriately and it's one less thing I have to worry about when I return back to the office," says Dr. Erdman.

Author(s): Danielle Chicano, Contributing Editor

Podiatric surgeons looking for a uniform and continuous compressive bone fixation system may want to check out a new nitinol bone fixation implant with a unique metric design.

The Super Staple Classic offers high, constant compression and greater shape change than any other implant in orthopedic bone fixation surgery, explains the manufacturer Metric Medical Devices. According to the company, the Super Staple Classic's shape-changing bridge and legs provide uniform compression throughout the osteotomy and offer active reduction for bone-gap management.

Barry Erdman, DPM, notes he has been using the Super Staple in his practice for approximately two and a half years. In comparison to other fixation devices, the Super Staple Classic is a "more robust and stout staple with a low profile," explains Dr. Erdman, who is in private practice in Appleton, Wis.

Additionally, Dr. Erdman notes that the staple's rigid compression properties allow it to pass even the most vigorous stress tests.

"I leave the OR with better peace of mind that the bones will heal appropriately and it's one less thing I have to worry about when I return back to the office," says Dr. Erdman, a Fellow of the American College of Foot and Ankle Surgeons.

Another advantage that Dr. Erdman notes is the staple's easy installation and storage. The Super Staple Classic is a nitinol staple that is active at room temperature and requires no heating or cooling, according to Metric Medical Devices. Dr. Erdman explains that in addition to not requiring a temperature sensitive environment, the staple does not require pre-sterilization as it comes ready to use in a sterile package.

Citing the Super Staple Classic's easy-to-store design, the lack of instrument processing required and a competitive price, Douglas Glod, DPM, says the device is the best product of its kind. Dr. Glod says the design of the staple helps ensure optimal compression.

"The beauty of this technology is with the concept of dynamic compression. We know that compression is a good thing with osteosynthesis," adds Dr. Glod, the Chief of Podiatric Medicine and Surgery at Memorial Hospital of Rhode Island. "Due to the design of the staple and material it is made of, a constant level of compression is obtained across the arthrodesis/osteotomy site that is maintained despite bone pliability, bone resorption and patient noncompliance. To me, dynamic compression is a game changer when it comes to osteosynthesis."

Metric Medical Devices says that the Super Staple provides two to six times higher pull-out force than body temperature or electrically activated nitinol staples, providing a reliable and sturdy compression.

Dr. Glod, a Fellow of the American College of Foot and Ankle Surgeons, explains that with a variety of sizes to choose from, the Super Staple Classic is conducive for the following procedures: Akin bunionectomy, Lapidus bunionectomy, naviculocuneiform fusion, talonavicular fusion, calcaneocuboid fusion, Lisfranc fusion (either isolated or complete) and in conjunction with other forms of fixation for procedures such as first metatarsophalangeal joint fusion. Additionally, Dr. Erdman finds the Super Staple's design particularly efficient when performing fusion/osteotomy cases of the midfoot. He has found the compression is so good with the Super Staple Classic that the immediate post-op X-rays make it appear the bone is already consolidated and healed.

Given the staple's superior functional design, ease of use and storage, and overall reliability, both Dr. Glod and Dr. Erdman feel confident using the Super Staple Classic in their practice.

"The Super Staple Classic simply reassures me that I have provided and employed in the patient the best fixative device, in my opinion and in my hands, that will lead to the best chance for a successful outcome," adds Dr. Erdman.

Author(s): Danielle Chicano, Contributing Editor
Ms. Chicano is a freelance writer who lives in Philadelphia.