

Super Staple™

Nitinol Bone Fixation System

STABLE

High strength and force insure
stable fixation

SIMPLE

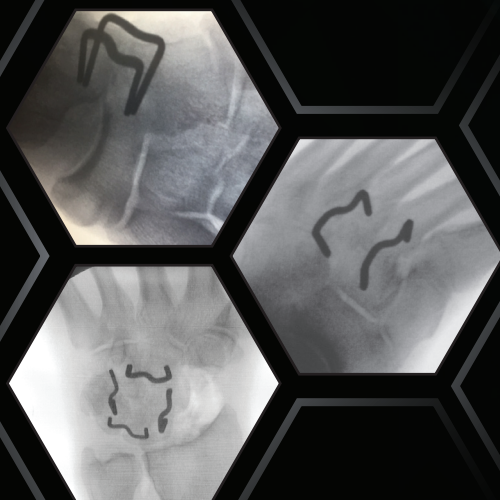
ZeroPrep™ pre-loaded insertion system
with instantly active implant

VERSATILE

Sizes for all fore, mid, and rear foot
reconstructions

FUSION

Dynamic compression for
bone healing



METRIC®
BRINGING BONES TOGETHER™

Super Staple™ Design Features



Patented SigmaArc™

- High strength and compression forces
- Low bone profile minimizes tissue disruption
- Contracts to bring bones together
- Most uniform compression available

ZeroPrep™ Pre-loaded Insertion System

- Simple push-in technique
- Pre-Sterilized System
- Disposable instrumentation
- Room temperature storage
- No activation required
- Minimally invasive procedure



S

P/N 21401
Dimensions: 09 x 09 x 09 1.5mm
Compression Force: 8.2 lbf
Reduction(mm): Bridge 1.2 Leg 2.9
P/N 16801
Dimensions: 11 x 10 x 10 1.5mm
Compression Force: 10.9 lbf
Reduction(mm): Bridge 1.4 Leg 4.0
P/N 16901
Dimensions: 11 x 15 x 13 1.5mm
Compression Force: 11.3 lbf
Reduction(mm): Bridge 1.0 Leg 4.0
P/N 17001
Dimensions: 13 x 10 x 10 1.5mm
Compression Force: 9.6 lbf
Reduction(mm): Bridge 1.2 Leg 3.5
P/N 17101
Dimensions: 15 x 12 x 12 1.5mm
Compression Force: 10.9 lbf
Reduction(mm): Bridge 1.5 Leg 5.4

M

P/N 17201
Dimensions: 15 x 12 x 12 2.0mm
Compression Force: 13.5 lbf
Reduction(mm): Bridge 2.0 Leg 5.2
P/N 17301
Dimensions: 18 x 18 x 15 2.0mm
Compression Force: 16.3 lbf
Reduction(mm): Bridge 1.8 Leg 6.2
P/N 17401
Dimensions: 20 x 20 x 20 2.0mm
Compression Force: 18.6 lbf
Reduction(mm): Bridge 1.6 Leg 8.9

L

P/N 17501
Dimensions: 20 x 20 x 20 2x3mm
Compression Force: 21.4 lbf
Reduction(mm): Bridge 1.6 Leg 9.0
P/N 22001
Dimensions: 25 x 25 x 25 2x3mm
Compression Force: 26 lbf
Reduction(mm): Bridge 1.5 Leg 12.9

Super Scaffold™



We bring you superior fixation,
Learn more at MetricMD.com



©2025 Metric Medical Devices, Inc.
846 Silver Springs, Helotes, TX 78023
(830) 535-6300

U.S. Federal Law restricts this device to sale by or on the order of a physician
Super Staple™ U.S. Patents 8,721,646 B2; 9,451,955 B2; 9,743,926; 9,451,957; 9,339,268;
9,017,331; 10,448,979; 10,512,459; E.P. 2,736,421 B1, other patents pending
Super Scaffold™ U.S. Patents 9,907,585; 10,537,370; 10,448,979; USRE049667; other patents pending

MEAN Compression and Reduction Data is presented
(Compression: lbf, S.E. <2.31) (Reduction: %, S.E. <2.87)

A01-008-01 (Q)

Super Scaffold™

Intramedullary Fixation Implant

STABLE

Dynamic compression and
multiaxial fixation prevent rotation

SIMPLE

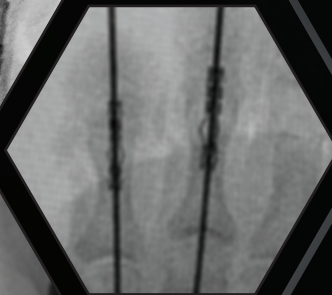
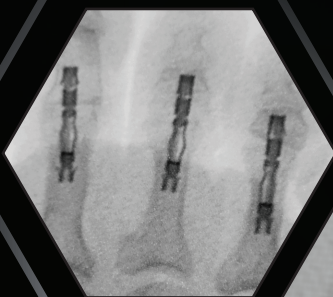
ZeroPrep™ sterile pre-loaded insertion
system with instantly active implant

VERSATILE

Cannulated for Kirschner-wire
compatibility

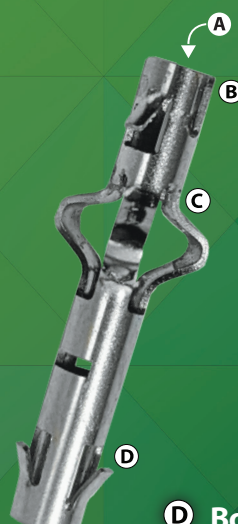

FUSION

Optimized fusion interface
for bone in-growth



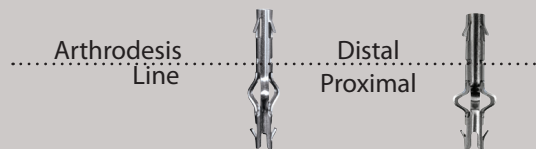
METRIC®
BRINGING BONES TOGETHER™

Super Scaffold™ Design Features

- 
- A Hollow Scaffold**
 - Allows bone in-growth
 - K-wire compatible for adjacent joint stabilization
 - Maintains open intramedullary canal
 - B Nitinol Memory Alloy**
 - Instantaneously active
 - High bone fixation forces
 - C OmegaBow™**
 - Expands to stabilize
 - Contracts to pull proximal and distal bones together
 - Provides continuous compression
 - D Bone Anchors**
 - Lock into bone and provide multi-axial fixation
 - Allow for compression at osteotomy
 - E ZeroPrep™ Pre-loaded insertion system**
 - Simple push-in technique
 - Disposable instrumentation
 - Room temperature storage
 - No activation required
- 

PRODUCT SIZING GUIDE

NOTE Implants actual size: 1.1mm K-Wire compatible

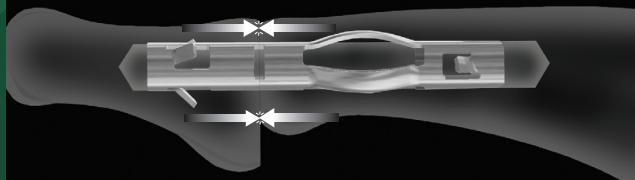


Part#	2265L3	2565S3
	S	M
Drill Bit (mm):	2.2	2.7
Distal Length (mm):	6.5	6.5
Proximal Length (mm):	11.0	13.0
Contraction (mm)**:	1.0	1.5
Expansion (mm)**:	3.5	5.1
F Expansion (lbf)*:	3.5	3.2
F Compression (lbf)*:	5.5	5.5

*Mean force (lbf, S.E. <0.30) ** Mean Shape Change (mm, S.E. <0.10)

The ONLY Interdigit Fixation Implant to Offer Both:

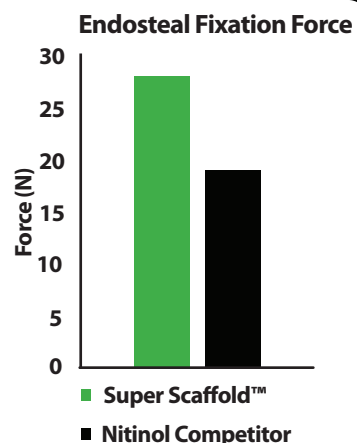
Dynamic Axial Compression



Continuous compressive forces on the fusion interface
 Maintains bone to bone contact
 Only product to compensate for normal bone resorption

Stabilizing Fixation

OmegaBow™ and bone anchors provide multi-axial stabilization
 Prevents axial rotation



Wolff's Law: Applying mechanical forces strengthens bone by stimulating cellular growth.

We bring you super fixation,
 Learn more at MetricMD.com

©2025 Metric Medical Devices, Inc.
 846 Silver Spgs. Helotes, TX 78023
 (830) 535-6300

U.S. Federal Law restricts this device to sale by or on the order of a physician
 Super Staple™ Patents U.S. 8,721,646; 9,017,331; 9,339,268; 9,451,955; 9,451,957; 9,734,926; 10,512,459;
 EP2,736,421; Hong Kong 15,101,842.1; and other patents pending
 Super Scaffold™ Patents 9,907,585; 10,448,979; 10,537,370; EP 2,765,936; other patents pending
A02-001-01 (G)



Super Staple™



LINK™

METRIC
 BRINGING BONES TOGETHER™



SuperSTEP™

Nitinol Bone Fixation System

STABLE

High Strength and force insure
stable fixation

SIMPLE

ZeroPrep™ pre-loaded insertion system
with instantly active implant

VERSATILE

Sizes for mid and rear foot
reconstructions

FUSION

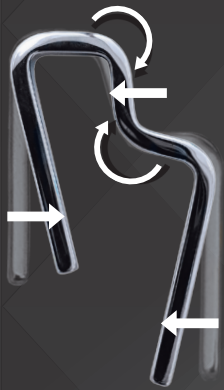
Dynamic compression for
bone healing



METRIC[®]
BRINGING BONES TOGETHER™

SuperSTEP™

Design Features



Patented ZetaArc™

- Unique variable step height
- High strength and compression forces
- Minimally invasive push in technique
- Shortening bridge and inward moving leg
- Most uniform compression available
- Low bone profile
- Various STEP heights: 6mm, 8mm, 10mm

P/N 20063 STEP-06

Dimensions: STEP-06 20 x 20 x 20 2x3mm

Compression Force: 21.2 lbf

Reduction: Bridge 17% Legs 42%

P/N 20083 STEP-08

Dimensions: STEP-08 20 x 20 x 22 2x3mm

Compression Force: 21.2 lbf

Reduction: Bridge 17% Legs 42%

P/N 20103 STEP-10

Dimensions: STEP-10 20 x 20 x 22 2x3mm

Compression Force: 21.2 lbf

Reduction: Bridge 17% Legs 42%



ZeroPrep™ Pre-loaded Insertion System

- Included disposable instrumentation
- Room temperature storage
- Instantaneously active
- Enhances infection control
- Worker safety considerations
- Logistically simple and ready



**We bring you superior fixation,
Learn more at MetricMD.com**

© 2020 Metric Medical Devices, Inc. 846 Silver Springs, Helotes, TX 78023
(830) 535-6300 A03-008-01 IR
U.S. Federal Law restricts this device to sale by or on the order of a physician
Patents 8,721,646 B2; 9, 451,955 B2; 9,743,926; 9,451,957; 9,339,268; 9,017,331;
10,512,549; E.P. 2,736,41 B1; 10,448,979, other patents pending