

# Super Staple™

## Nitinol Bone Fixation System

### **STABLE**

High strength and force insure  
stable fixation

### **SIMPLE**

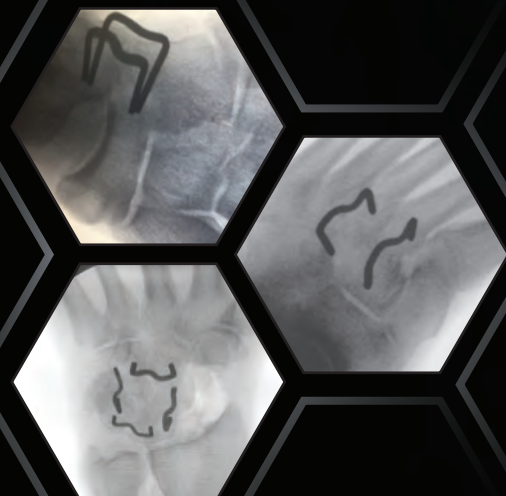
ZeroPrep™ pre-loaded insertion system  
with instantly active implant

### **VERSATILE**

Sizes for all fore, mid, and rear foot  
reconstructions

### **FUSION**

Dynamic compression for  
bone healing



**METRIC**<sup>®</sup>  
BRINGING BONES TOGETHER™

# Super Staple™ Design Features



## Patented SigmaArc™

- High strength and compression forces
- Low bone profile minimizes tissue disruption
- Contracts to bring bones together
- Most uniform compression available

## ZeroPrep™ Pre-loaded Insertion System

- Simple push-in technique
- Pre-Sterilized System
- Disposable instrumentation
- Room temperature storage
- No activation required
- Minimally invasive procedure



S

P/N 16601

Dimensions: 09 x 07 x 07 1.5mm

Compression Force: 7.4 lbf

Reduction(mm): Bridge 1.2 Leg 2.9

P/N 21401

Dimensions: 09 x 09 x 09 1.5mm

Compression Force: 8.2 lbf

Reduction(mm): Bridge 1.2 Leg 2.9

P/N 16801

Dimensions: 11 x 10 x 10 1.5mm

Compression Force: 10.9 lbf

Reduction(mm): Bridge 1.4 Leg 4.0

P/N 16901

Dimensions: 11 x 15 x 13 1.5mm

Compression Force: 11.3 lbf

Reduction(mm): Bridge 1.0 Leg 4.0

P/N 17001

Dimensions: 13 x 10 x 10 1.5mm

Compression Force: 9.6 lbf

Reduction(mm): Bridge 1.2 Leg 3.5

P/N 17101

Dimensions: 15 x 12 x 12 1.5mm

Compression Force: 10.9 lbf

Reduction(mm): Bridge 1.5 Leg 5.4

M

P/N 17201

Dimensions: 15 x 12 x 12 2.0mm

Compression Force: 13.5 lbf

Reduction(mm): Bridge 2.0 Leg 5.2

P/N 17301

Dimensions: 18 x 18 x 15 2.0mm

Compression Force: 16.3 lbf

Reduction(mm): Bridge 1.8 Leg 6.2

P/N 17401

Dimensions: 20 x 20 x 20 2.0mm

Compression Force: 18.6 lbf

Reduction(mm): Bridge 1.6 Leg 8.9

L

P/N 17501

Dimensions: 20 x 20 x 20 2x3mm

Compression Force: 21.4 lbf

Reduction(mm): Bridge 1.6 Leg 9.0

P/N 22001

Dimensions: 25 x 25 x 25 2x3mm

Compression Force: 26 lbf

Reduction(mm): Bridge 1.5 Leg 12.9

## Super Scaffold™



We bring you superior fixation,  
Learn more at [MetricMD.com](http://MetricMD.com)

©2020 Metric Medical Devices, Inc.  
846 Silver Springs, Helotes, TX 78023  
(830) 535-6300

U.S. Federal Law restricts this device to sale by or on the order of a physician  
Super Staple™ U.S. Patents 8,721,646 B2; 9,451,955 B2; 9,743,926; 9,451,957; 9,339,268;  
9,017,331; 10,448,979; 10,512,459; E.P. 2,736,421 B1, other patents pending  
Super Scaffold™ U.S. Patents 9,907,585; 10,537,370; 10,448,979; other patents pending

MEAN Compression and Reduction Data is presented  
(Compression: lbf, S.E. <2.31) (Reduction: %, S.E. <2.87)

A01-008-01 (O)

**METRIC**  
BRINGING BONES TOGETHER™



# SuperSTEP™

## Nitinol Bone Fixation System

### STABLE

High Strength and force insure  
stable fixation

### SIMPLE

ZeroPrep™ pre-loaded insertion system  
with instantly active implant

### VERSATILE

Sizes for mid and rear foot  
reconstructions

### FUSION

Dynamic compression for  
bone healing

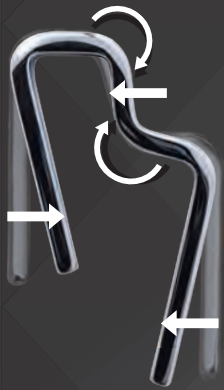


**METRIC**<sup>®</sup>  
BRINGING BONES TOGETHER™



# SuperSTEP™

## Design Features



### Patented ZetaArc™

- Unique variable step height
- High strength and compression forces
- Minimally invasive push in technique
- Shortening bridge and inward moving leg
- Most uniform compression available
- Low bone profile
- Various STEP heights: 6mm, 8mm, 10mm

P/N 20063 STEP-06

Dimensions: STEP-06 20 x 20 x 20 2x3mm

Compression Force: 21.2 lbf

Reduction: Bridge 17% Legs 42%

P/N 20083 STEP-08

Dimensions: STEP-08 20 x 20 x 22 2x3mm

Compression Force: 21.2 lbf

Reduction: Bridge 17% Legs 42%

P/N 20103 STEP-10

Dimensions: STEP-10 20 x 20 x 22 2x3mm

Compression Force: 21.2 lbf

Reduction: Bridge 17% Legs 42%



### ZeroPrep™ Pre-loaded Insertion System

- Included disposable instrumentation
- Room temperature storage
- Instantaneously active
- Enhances infection control
- Worker safety considerations
- Logistically simple and ready



**We bring you superior fixation,  
Learn more at [MetricMD.com](http://MetricMD.com)**

© 2020 Metric Medical Devices, Inc. 846 Silver Springs, Helotes, TX 78023  
(830) 535-6300 A03-008-01 IR  
U.S. Federal Law restricts this device to sale by or on the order of a physician  
Patents 8,721,646 B2; 9, 451,955 B2; 9,743,926; 9,451,957; 9,339,268; 9,017,331;  
10,512,549; E.P. 2,736,41 B1; 10,448,979, other patents pending

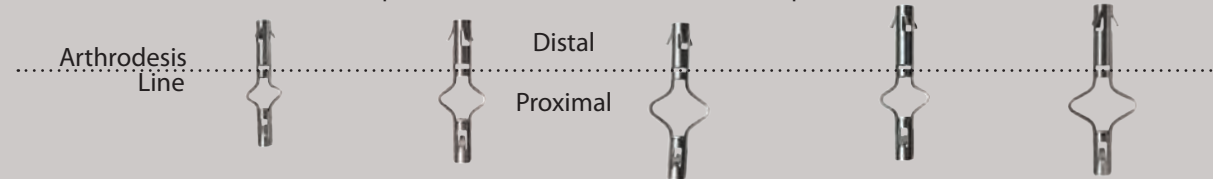


## Maximized Fusion Interface



### Super Scaffold™ PRODUCT SIZING GUIDE

NOTE Implants actual size: 1.1mm K-Wire compatible



Part#	2265L3	2565S3	2565L3	2585S3	2585L3
	<b>S</b>	<b>M</b>	<b>M</b>	<b>M</b>	<b>M</b>
Drill Bit (mm):	2.2	2.7	2.7	2.7	2.7
Distal Length (mm):	6.5	6.5	6.5	8.5	8.5
Proximal Length (mm):	11.0	14.0	17.0	14.0	17.0
Contraction (mm)**:	1.0	2.0	3.0	2.0	3.0
F Expansion (lbf)*:	3.5	3.8	2.5	3.8	2.5
F Compression (lbf)*:	5.5	7.5	7.5	7.5	7.5

\*Mean force (lbf, S.E. <0.30) \*\* Mean Shape Change (mm, S.E. <0.10)

# Super Scaffold™

## Intramedullary Fixation System

### STABLE

Dynamic compression and multiaxial fixation prevent rotation

### SIMPLE

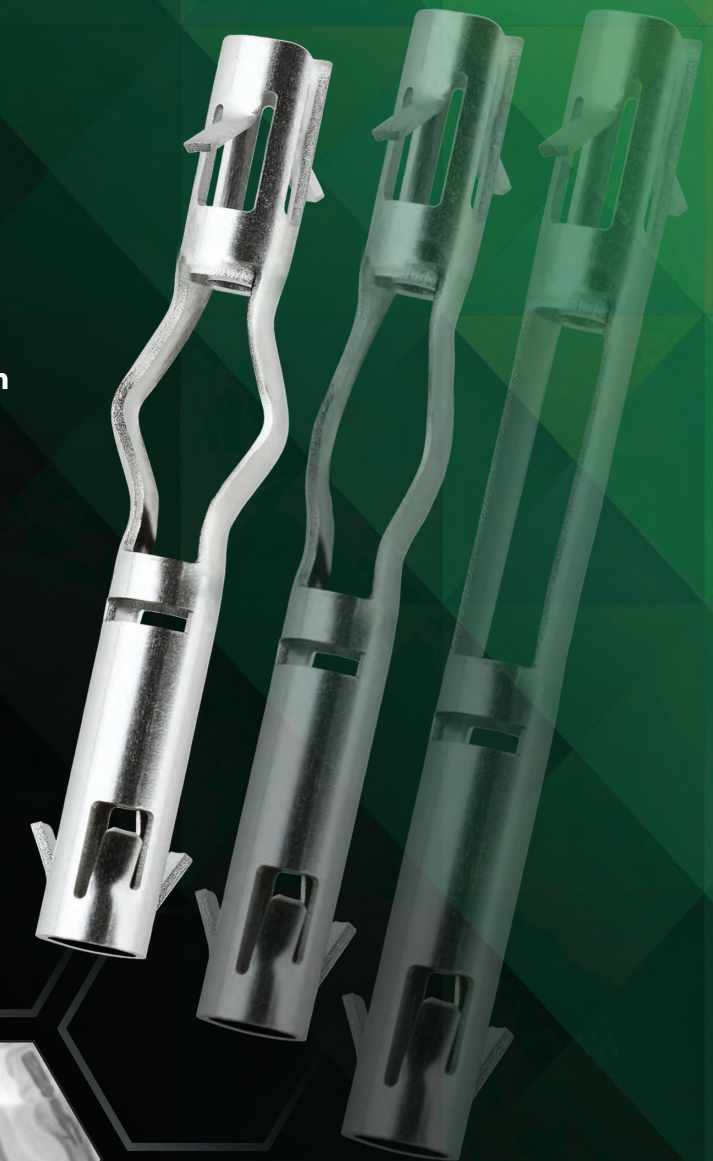
ZeroPrep™ sterile pre-loaded insertion system with instantly active implant

### VERSATILE

Cannulated for Kirschner-wire compatibility

### FUSION

Optimized fusion interface for bone in-growth



We bring you super fixation,  
Learn more at [MetricMD.com](http://MetricMD.com)

©2020 Metric Medical Devices, Inc.  
846 Silver Spgs. Helotes, TX 78023  
(830) 535-6300

U.S. Federal Law restricts this device to sale by or on the order of a physician

Super Staple™ Patents 8,721,646 B2; 9,451,955 B2; 9,743,926; 9,451,957; 9,339,268; 9,017,331; 10,512,549  
E.P. 2,736,41 B1; 10,448,979, other patents pending

Super Scaffold™ Patents 9,907,585; 10,537,370; 10,448,979; other patents pending

A02-001-02 (B)

  
Super Staple™

**METRIC**  
BRINGING BONES TOGETHER™



**METRIC**  
BRINGING BONES TOGETHER™



# Super Scaffold™ Design Features



- A Hollow Scaffold**
- Allows bone in-growth
  - K-wire compatible for adjacent joint stabilization
  - Maintains intramedullary canal

- B Proprietary Nitinol Memory Alloy**
- Instantaneously active
  - High bone fixation forces

- C OmegaBow™** ST HL
- Expands to stabilize
  - Contracts to pull proximal and distal bones together
  - Provides continuous compression

- D Bone Anchors**
- Lock into bone and provide multi-axial fixation
  - Allow for compression at osteotomy

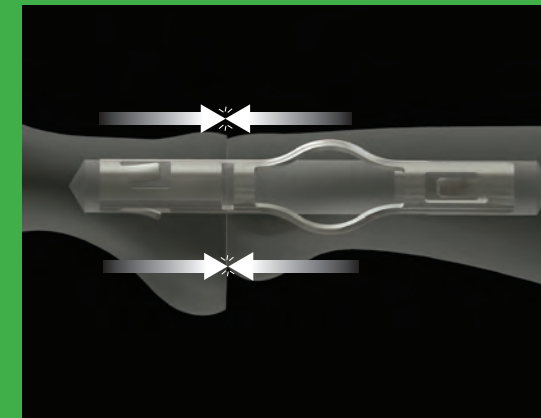
- E ZeroPrep™ Pre-loaded insertion system**
- Simple push-in technique
  - Disposable instrumentation
  - Room temperature storage
  - No activation required



# The ONLY Interdigit Fixation System to Offer Both:

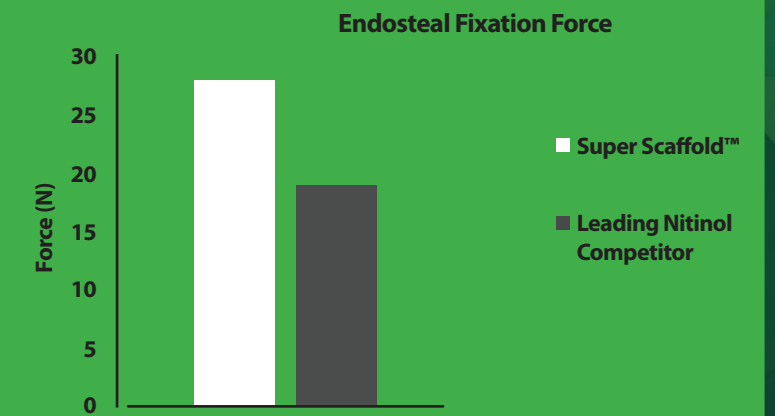
## Dynamic Axial Compression

- Continuous compressive forces on the fusion interface
- Maintains bone on bone contact
- Only product to compensate for normal bone resorption



## Stabilizing Fixation

- OmegaBow™ and bone anchors provide multi-axial stabilization
- Prevents axial rotation



Wolff's Law: Applying mechanical forces strengthens bone by stimulating cellular growth.

	ST	HL	Metric Super Scaffold™
Contracting forces at osteotomy			✓
Bone conducting scaffold			✓
Cannulated for k-wire compatibility			✓
Rotational stability	✓	✓	✓
Single drill procedure - no broaching			✓
Activates at room temperature			✓
All-in-one procedural kit			✓
Pre-loaded insertion instrument		✓	✓

Breakthrough design for *superior fixation* and bone healing